

Beautiful and Functional Home Modifications with ALS in Mind



What Do I Need to Consider?

- ▶ Modification priority.
- ▶ Design solutions & right solution for the challenge.
- ▶ What solutions minimize the human hands element.
- ▶ General costs. Funding Resources.
- ▶ Considerations when finding a contractor, medical equipment local expert.



How long have you lived in your home?

Is this your “Forever Home”?

What activities are important to you?

?

The questions are...

?

What would it cost to move?

How can you make your home as safe and as comfortable as possible for your family?

Who comes to visit?

What are the top barrier areas in my home?

Entrance & Exit

Levels & Stairs

Bathrooms

Transfers

Where do you enter and exit your home?



Where do you enter and exit your home?



Entrance/Exit Solution - No Step Front Entry



Entrance Solutions - Custom Steel Railings & Concrete Ramp



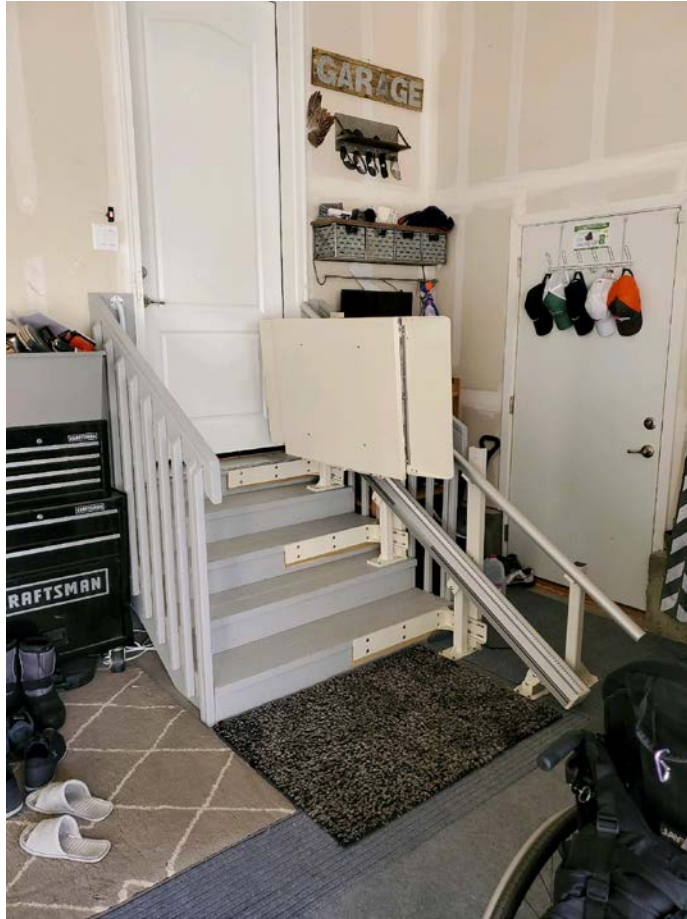
Entrance/Exit Solution - Modular Ramp



Entrance/Exit Solutions - Wooden Ramps



Entrance/Exit Solution - Inclined Platform Lift



Entrance/Exit Solution - Vertical Platform Lift



What are the top barrier areas in my home?

Entrance & Exit

Levels & Stairs

Bathrooms

Transfers

Levels Inside the Home - Options

Residential Elevator



- Custom cab sizes from 12 -15 sq. ft. and 1000lbs
- Safety options like battery backup and manual lowering
- Door openings custom to your home such as 3 sides

Through the Floor Elevator



- Custom sizes and 550 lbs capacity
- Space saving design to fit your home floor plan
- Less expensive than residential elevators

Vertical Platform Lift



- Up to 750 lbs capacity
- Up to 3 floors and 14 sq. ft. vertical travel
- Interior or exterior applications

Levels Inside the Home - Options

Inclined Platform Lift



- Up to 18 sq. ft. and up to 450lbs
- Fits in a staircase as narrow as 35 inches wide
- Can Carry Wheelchair or Scooter

Curved Stairlift



- Up to 400lbs capacity
- Custom-crafted to maximize stairway space
- Mid-park and charging station
- Dependable operation even during power cuts

Straight Stairlift



- Up to 400 lbs capacity
- Vertical rail with covered gear rack for clean appearance
- Very affordable
- Easy, quick installation and removal

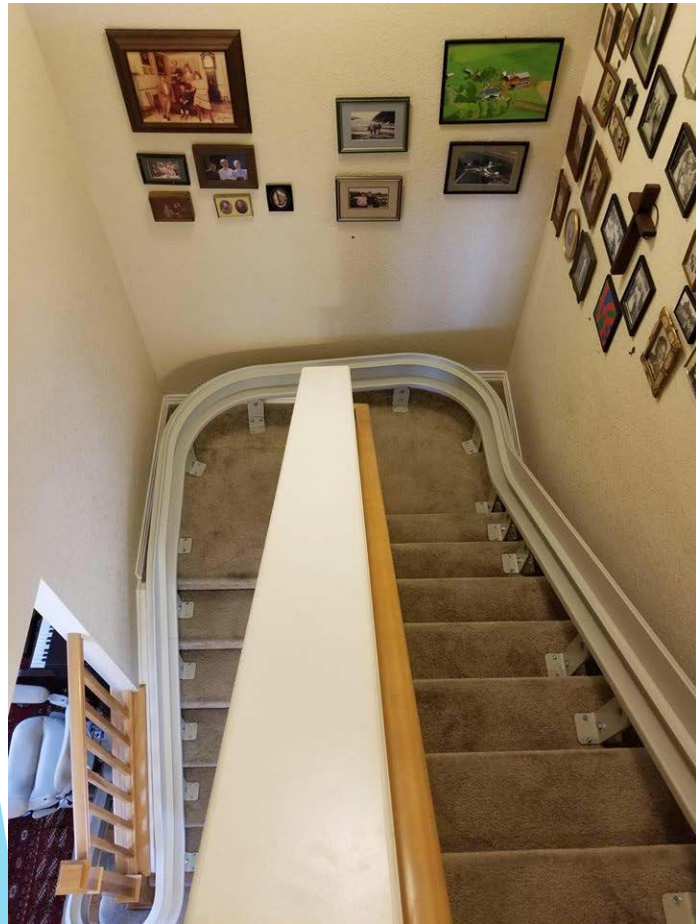
Levels Inside - Solutions



Levels Inside - Solutions - Straight Stairlift



Levels Inside - Solutions - Curved Stairlifts



Levels Inside - Solutions - Curved Stairlifts



Indoor Curve Stairlift Solutions



Levels Inside - Solutions - Elevators



What are the top barrier areas in my home?

Entrance & Exit

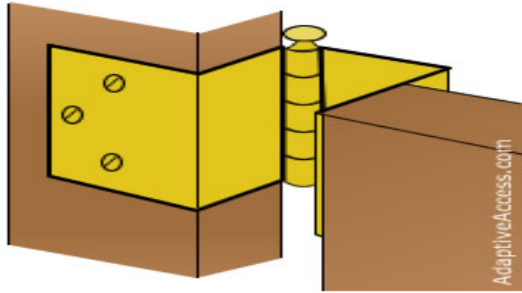
Levels & Stairs

Bathrooms

Transfers

Narrow Doorway Solutions

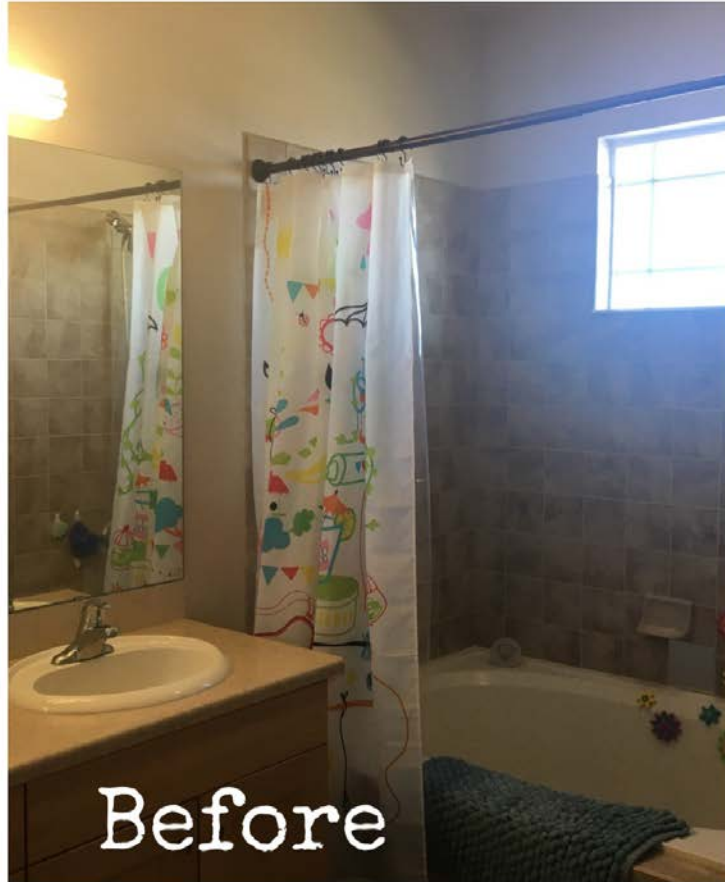
- ▶ Construction
- ▶ Swing Away Hinge
- ▶ Barn Door



Barrier Free Bathrooms



Barrier Free Bathrooms



Barrier Free Bathrooms



Barrier Free Bathroom



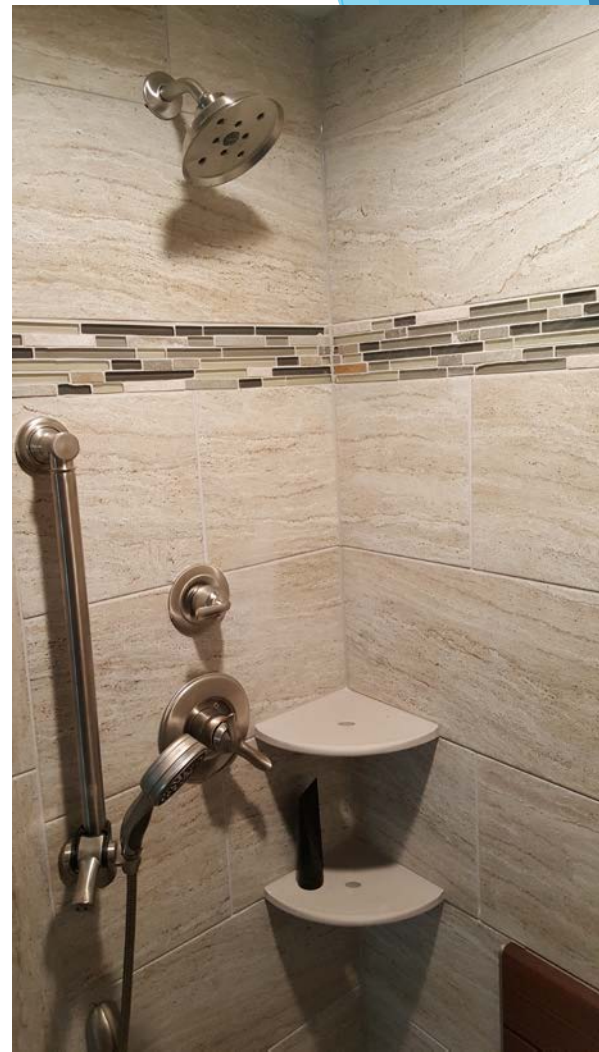
Barrier Free Bathrooms – Door Widening



The Weckesser Family - Parkinsons



Barrier Free Bathrooms



Barrier Free Bathrooms



Tub to Shower Conversions



Walk in Tubs





Toilet Solutions

- ▶ Bidets
- ▶ Raised and Elongated
- ▶ Toilevator



What are the top barrier areas in my home?

Entrance & Exit

Levels & Stairs

Bathrooms

Transfers

Recommended Transfer Solution: Surehands Body Support



Gives you a gentle squeeze



Slings vs. Body Support (caregivers input)

- Fits all body shapes and sizes
- Secure and safe - hugs with body weight
- Caregiver transfer ease and time reduction
- Durability
- Provides Independence - even when the unexpected happens



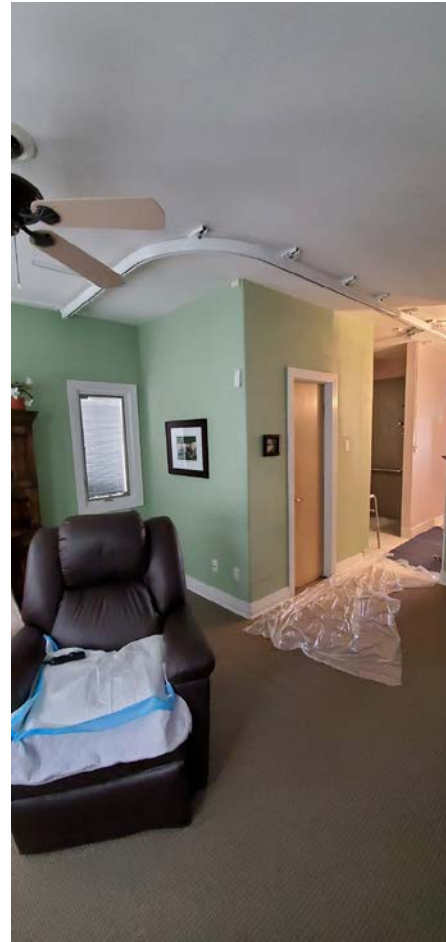
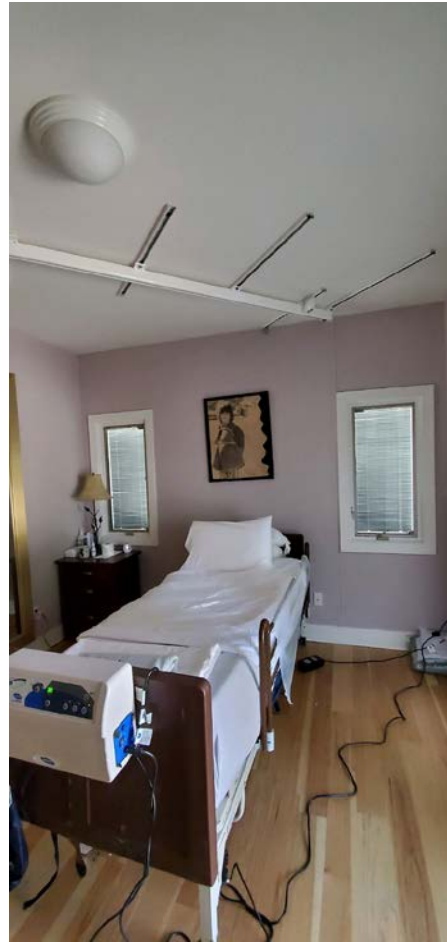
Slings vs. Body Support (caregivers input)

- Easy to use, clean, easy to bath/clean client - very hygienic
- Reduces abrasion to skin (Sheer)
- Reduces soreness of transfers by different caregiver techniques or equipment
- Tone - (CP clients are able to use this option)

Remodel vs. Lift



Right Lift Solution for the Challenge



Right Lift Solution for the Challenge



Right Lift Solution for the Challenge



***“Anyone that is NOT ambulatory
it is no question,”
Kathy, CNA***

Transfer Solution: Ceiling Track Motor with Body Support



Bathroom



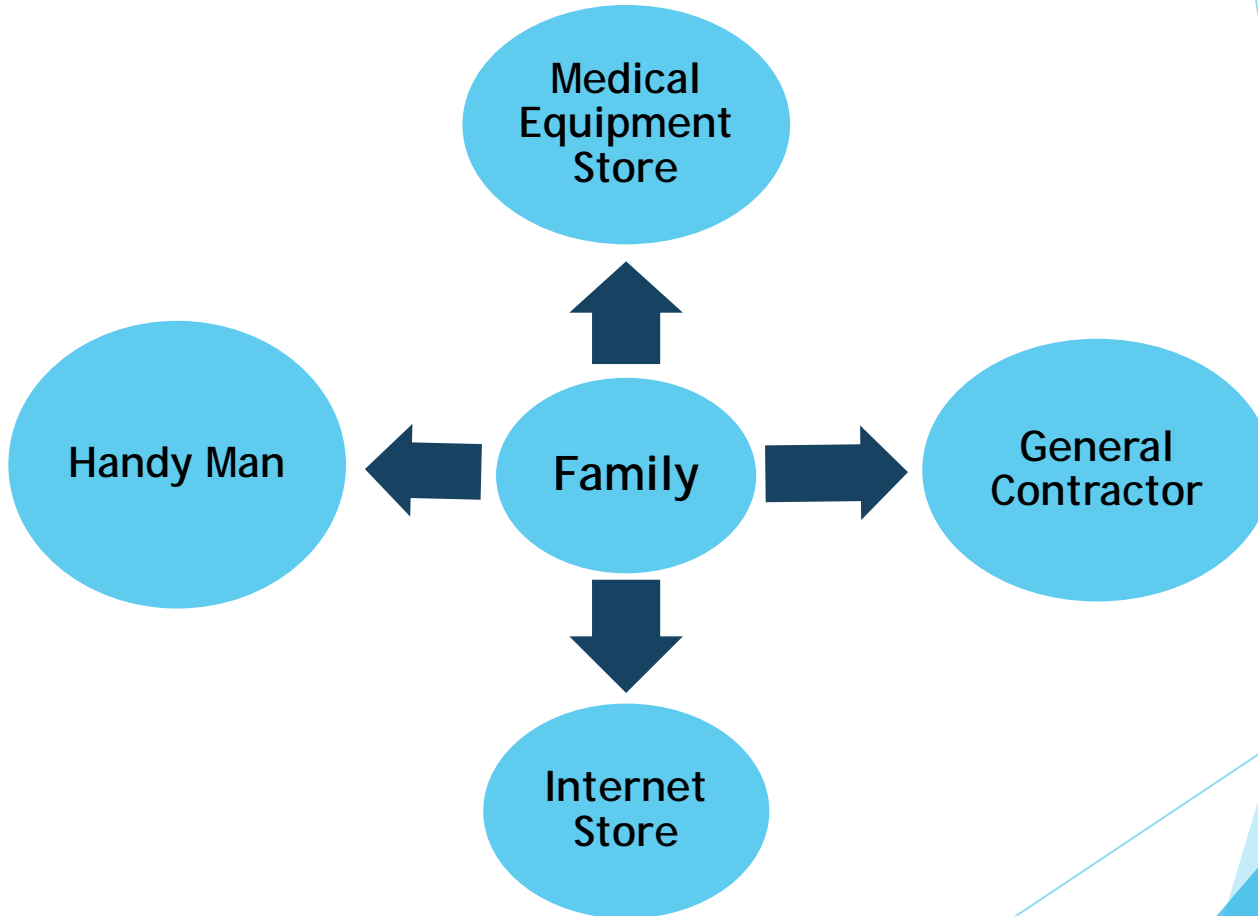
Bedroom



Living Room



Where Can Families Go for Expertise?



10 Tips for ALS Home Modifications and Adaptive Equipment

- 1. Understand your options** and seek help from a contractor that genuinely cares about your situation, and that offers full service – equipment, remodeling, exceptional customer service. All these factors matter.
- 2. Get a full evaluation** specific to your needs from a proven and certified professional. There may be a solution that you haven't thought of.
- 3. Prioritize need and budget.** Make a list and weigh your options. There can be a difference between what is desired and what is realistic.
- 4. Evaluate lift and transfer solutions** to reduce the human aid element. A ceiling lift may work better than a mobile lift, for example. Enjoy your independence for as long as possible. Non-Profits and Foundations
- 5. Contact your local ALS foundation** to visit their learning lab, gain support from their care coordinators and learn what is available through their loan closet.

10 Tips for ALS Home Modifications and Adaptive Equipment

6. **Add bathroom grab bars**, which are one of the most affordable and viable solutions available to help reduce falls.
7. **Widen doorways** if you depend on a wheelchair or any other equipment on wheels that require a bit more space for safe passage.
9. **Consider a bathroom remodel** with no threshold or barriers. Roll-in showers and walk-in tubs can greatly improve comfort and ease of bathing.
10. **Couple adaptive solutions based on priority list.** A barrier-free bathroom remodel OR a combination of an elevator/stairlift and a TubBuddy System that works with your existing bathroom.
10. **Explore funding options** that may be available for your family. Home modifications and adaptive equipment installation may be covered by a non-profit or a government-backed grant. Look for that free money.

Funding Resources

- Assistive Technology Partners
- Medicaid & VA
- Long Term Care Insurance
- Voc Rehab
- Worker's Compensation
- City & National Grant Programs
- Non-Profits and Foundations

National Home Access Resources

- accessiblemed.com
- homeaccessprofessionals.com

Questions



Presenter: Amy Reid, Accessible Systems, amy@accessiblemed.com